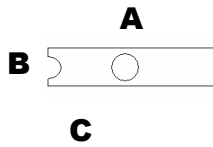


Connection instructions 37572 12V Flush Fitting 2-Pin Socket

Unscrew the socket and remove the connectors



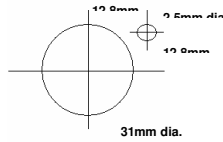
Strip cable insulation 16mm.
Pass stripped wire through hole 'A' along the pin and into slot 'B'. Fold the excess wire around tag 'C'. Soldering of the wire is essential for secure fixing.

Refit the connectors into the socket ensuring correct polarity.

Screw socket front plate into place

Connections to the plug supplied are made by the same method.

Cut mounting hole as



Clip socket into mounting hole, if panel thickness is greater than 5mm. Remove faceplate and screw through mounting holes.